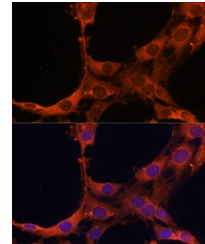


Product Datasheet

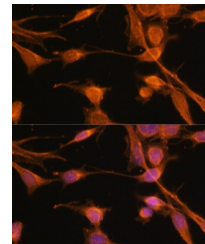
SMAD2 Antibody (orb1258830)

| | |
|----------------------------|---|
| Description | SMAD2 Antibody |
| Species/Host | Rabbit |
| Reactivity | Human, Mouse, Rat |
| Conjugation | Unconjugated |
| Tested Applications | IF, IHC, WB |
| Immunogen | A synthetic peptide of human SMAD2. |
| Target | SMAD2 |
| Preservatives | Liquid |
| Form/Appearance | Liquid |
| Concentration | batch dependent |
| Storage | Store at -20˚°C. Avoid freeze / thaw cycles. |
| Note | For research use only |
| Application notes | WB: 1:500 - 1:2000IHC: 1:50 - 1:200IF: 1:50 - 1:200 |
| Isotype | IgG |
| Clonality | Polyclonal |
| Uniprot ID | Q15796 |
| Dilution Range | WB: 1:500 - 1:2000IHC: 1:50 - 1:200IF: 1:50 - 1:200 |
| Expiration Date | 12 months from date of receipt. |



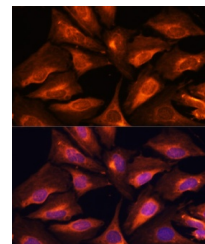
Immunofluorescence analysis of C6 cells

...



Immunofluorescence analysis of NIH-3T3

C...



Immunofluorescence analysis of U-2 OS

ce...