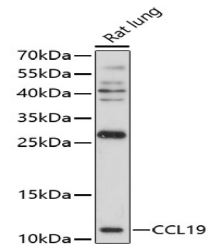


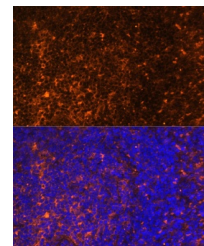
Product Datasheet

CCL19 Antibody (orb1258810)

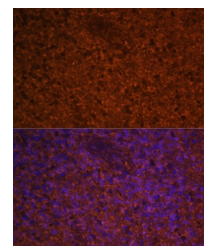
Description	CCL19 Antibody
Species/Host	Rabbit
Reactivity	Human, Mouse, Rat
Conjugation	Unconjugated
Tested Applications	IF, WB
Immunogen	Recombinant fusion protein containing a sequence corresponding to amino acids 22-95 of human CCL19 (NP_006265.1).
Target	CCL19
Preservatives	Liquid
Form/Appearance	Liquid
Concentration	batch dependent
Storage	Store at -20˚°C. Avoid freeze / thaw cycles.
Note	For research use only
Application notes	WB: 1:500 - 1:2000IF: 1:50 - 1:100
Isotype	IgG
Clonality	Polyclonal
Uniprot ID	Q99731
Dilution Range	WB: 1:500 - 1:2000IF: 1:50 - 1:100
Expiration Date	12 months from date of receipt.



Western blot analysis of extracts of rat...



Immunofluorescence analysis of rat splee...



Immunofluorescence analysis of human spl...