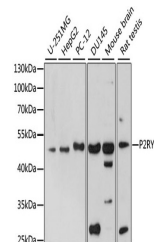


Product Datasheet

P2RY12 Antibody (orb1258768)

| | |
|----------------------------|---|
| Description | P2RY12 Antibody |
| Species/Host | Rabbit |
| Reactivity | Human, Mouse, Rat |
| Conjugation | Unconjugated |
| Tested Applications | WB |
| Immunogen | A synthetic peptide corresponding to a sequence within amino acids 200 to the C-terminus of human P2RY12 (NP_795345.1). |
| Target | P2RY12 |
| Preservatives | Liquid |
| Form/Appearance | Liquid |
| Concentration | batch dependent |
| Storage | Store at -20˚°C. Avoid freeze / thaw cycles. |
| Note | For research use only |
| Application notes | WB: 1:500 - 1:2000 |
| Isotype | IgG |
| Clonality | Polyclonal |
| MW | Observed: 50kDa |
| Uniprot ID | Q9H244 |
| Dilution Range | WB: 1:500 - 1:2000 |
| Expiration Date | 12 months from date of receipt. |



Western blot analysis of extracts of var...