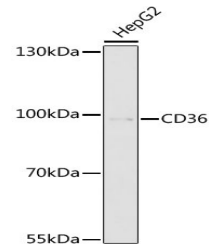


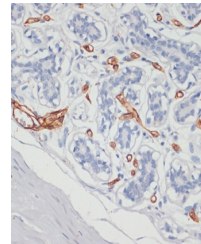
Product Datasheet

CD36 Antibody (orb1258724)

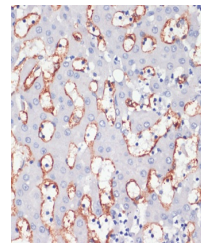
Description	CD36 Antibody
Species/Host	Rabbit
Reactivity	Human, Mouse, Rat
Conjugation	Unconjugated
Tested Applications	IHC, WB
Immunogen	Recombinant protein of human CD36.
Target	CD36
Preservatives	Liquid
Form/Appearance	Liquid
Concentration	batch dependent
Storage	Store at -20°C. Avoid freeze / thaw cycles.
Note	For research use only
Application notes	WB: 1:500 - 1:2000 IHC: 1:10 - 1:100
Isotype	IgG
Clonality	Polyclonal
MW	Observed: 90kDa
Uniprot ID	P16671
Dilution Range	WB: 1:500 - 1:2000 IHC: 1:10 - 1:100
Expiration Date	12 months from date of receipt.



Western blot analysis of extracts of Hep...



Immunohistochemistry of paraffin-embedde...



Immunohistochemistry of paraffin-embedde...