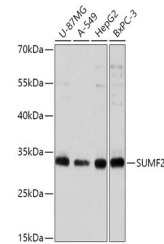


Product Datasheet

SUMF2 Antibody (orb1258614)

Description	SUMF2 Antibody
Species/Host	Rabbit
Reactivity	Human, Mouse, Rat
Conjugation	Unconjugated
Tested Applications	IF, WB
Immunogen	Recombinant fusion protein containing a sequence corresponding to amino acids 45-320 of human SUMF2 (NP_056226.2).
Target	SUMF2
Preservatives	Liquid
Form/Appearance	Liquid
Concentration	batch dependent
Storage	Store at -20˚°C. Avoid freeze / thaw cycles.
Note	For research use only
Application notes	WB: 1:500 - 1:2000IF: 1:50 - 1:100
Isotype	IgG
Clonality	Polyclonal
MW	Observed: 34kDa
Uniprot ID	Q8NBJ7
Dilution Range	WB: 1:500 - 1:2000IF: 1:50 - 1:100
Expiration Date	12 months from date of receipt.



Western blot analysis of extracts of var...