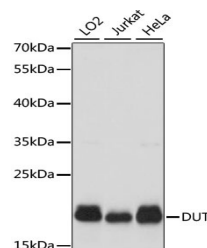


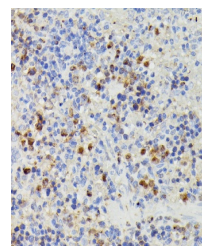
Product Datasheet

DUT Antibody (orb1258016)

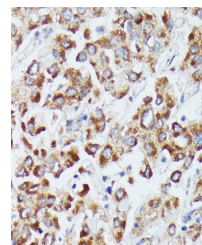
Description	DUT Antibody
Species/Host	Rabbit
Reactivity	Human, Mouse, Rat
Conjugation	Unconjugated
Tested Applications	IF, IHC, WB
Immunogen	Recombinant fusion protein containing a sequence corresponding to amino acids 89-252 of human DUT (NP_001020419.1).
Target	DUT
Preservatives	Liquid
Form/Appearance	Liquid
Concentration	batch dependent
Storage	Store at -20°C. Avoid freeze / thaw cycles.
Note	For research use only
Application notes	WB: 1:500 - 1:1000 IHC: 1:50 - 1:200 IF: 1:100 - 1:200
Isotype	IgG
Clonality	Polyclonal
MW	Observed: 24kDa
Uniprot ID	P33316
Dilution Range	WB: 1:500 - 1:1000 IHC: 1:50 - 1:200 IF: 1:100 - 1:200
Expiration Date	12 months from date of receipt.



Western blot analysis of extracts of var...



Immunohistochemistry of paraffin-embedde...



Immunohistochemistry of paraffin-embedde...