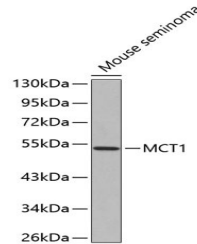


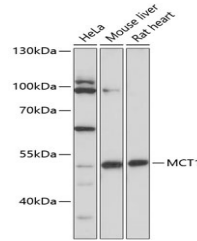
## Product Datasheet

### SLC16A1 Antibody (orb1257982)

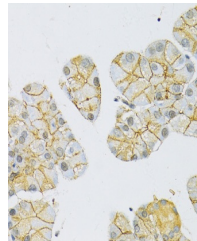
|                            |   |
|----------------------------|---|
| <b>Description</b>         | SLC16A1 Antibody                            |
| <b>Species/Host</b>        | Rabbit                                      |
| <b>Reactivity</b>          | Human, Mouse, Rat                           |
| <b>Conjugation</b>         | Unconjugated                                |
| <b>Tested Applications</b> | IHC, WB                                     |
| <b>Immunogen</b>           | A synthetic peptide of human MCT1           |
| <b>Target</b>              | SLC16A1                                     |
| <b>Preservatives</b>       | Liquid                                      |
| <b>Form/Appearance</b>     | Liquid                                      |
| <b>Concentration</b>       | batch dependent                             |
| <b>Storage</b>             | Store at -20°C. Avoid freeze / thaw cycles. |
| <b>Note</b>                | For research use only                       |
| <b>Application notes</b>   | WB: 1:1000 - 1:2000 IHC: 1:50 - 1:200       |
| <b>Isotype</b>             | IgG   |
| <b>Clonality</b>           | Polyclonal                                  |
| <b>MW</b>                  | Observed: 54kDa                             |
| <b>Uniprot ID</b>          | <b>P53985</b>                               |
| <b>Dilution Range</b>      | WB: 1:1000 - 1:2000 IHC: 1:50 - 1:200       |
| <b>Expiration Date</b>     | 12 months from date of receipt.             |



Western blot analysis of extracts of mou...



Western blot analysis of extracts of var...



Immunohistochemistry of paraffin-embedde...