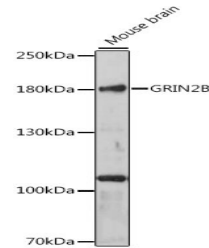


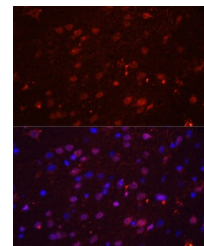
Product Datasheet

GRIN2B Antibody (orb1257969)

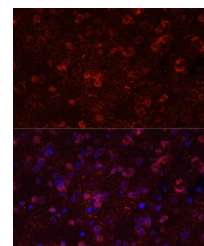
| | |
|----------------------------|--|
| Description | GRIN2B Antibody |
| Species/Host | Rabbit |
| Reactivity | Human, Mouse, Rat |
| Conjugation | Unconjugated |
| Tested Applications | IF, WB |
| Immunogen | A synthetic peptide corresponding to a sequence within amino acids 1400 to the C-terminus of human GRIN2B (NP_000825.2). |
| Target | GRIN2B |
| Preservatives | Liquid |
| Form/Appearance | Liquid |
| Concentration | batch dependent |
| Storage | Store at -20°C. Avoid freeze / thaw cycles. |
| Note | For research use only |
| Application notes | WB: 1:500 - 1:2000IF: 1:50 - 1:200 |
| Isotype | IgG |
| Clonality | Polyclonal |
| MW | Observed: 181kDa |
| Uniprot ID | Q13224 |
| Dilution Range | WB: 1:500 - 1:2000IF: 1:50 - 1:200 |
| Expiration Date | 12 months from date of receipt. |



Western blot analysis of extracts of mouse brain.



Immunofluorescence analysis of rat brain tissue.



Immunofluorescence analysis of mouse brain tissue.