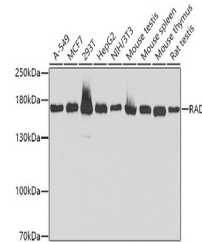


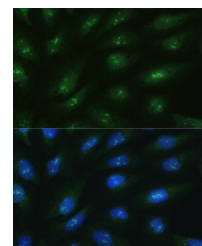
Product Datasheet

RAD50 Antibody (orb1257961)

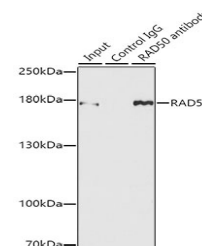
| | |
|----------------------------|--|
| Description | RAD50 Antibody |
| Species/Host | Rabbit |
| Reactivity | Human, Mouse, Rat |
| Conjugation | Unconjugated |
| Tested Applications | IF, IP, WB |
| Immunogen | A synthetic peptide corresponding to a sequence within amino acids 1-100 of human RAD50 (NP_005723.2). |
| Target | RAD50 |
| Preservatives | Liquid |
| Form/Appearance | Liquid |
| Concentration | batch dependent |
| Storage | Store at -20°C. Avoid freeze / thaw cycles. |
| Note | For research use only |
| Application notes | WB: 1:500 - 1:2000IF: 1:50 - 1:200IP: 1:20 - 1:50 |
| Isotype | IgG |
| Clonality | Polyclonal |
| MW | Observed: 170kDa |
| Uniprot ID | Q92878 |
| Dilution Range | WB: 1:500 - 1:2000IF: 1:50 - 1:200IP: 1:20 - 1:50 |
| Expiration Date | 12 months from date of receipt. |



Western blot analysis of extracts of var...



Immunofluorescence analysis of U2OS cell...



Immunoprecipitation analysis of 150 ug e...