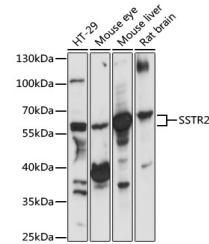


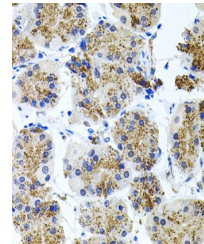
Product Datasheet

SSTR2 Antibody (orb1257940)

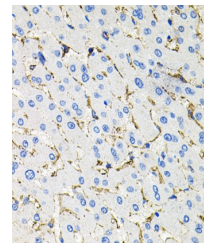
Description	SSTR2 Antibody
Species/Host	Rabbit
Reactivity	Human, Mouse, Rat
Conjugation	Unconjugated
Tested Applications	IF, IHC, WB
Immunogen	A synthetic peptide corresponding to a sequence within amino acids 300 to the C-terminus of human SSTR2 (NP_001041.1).
Target	SSTR2
Preservatives	Liquid
Form/Appearance	Liquid
Concentration	batch dependent
Storage	Store at -20˚°C. Avoid freeze / thaw cycles.
Note	For research use only
Application notes	WB: 1:500 - 1:1000IHC: 1:50 - 1:100IF: 1:100 - 1:200
Isotype	IgG
Clonality	Polyclonal
MW	Observed: 56kDa
Uniprot ID	P30874
Dilution Range	WB: 1:500 - 1:1000IHC: 1:50 - 1:100IF: 1:100 - 1:200
Expiration Date	12 months from date of receipt.



Western blot analysis of extracts of var...



Immunohistochemistry of paraffin-embedde...



Immunohistochemistry of paraffin-embedde...