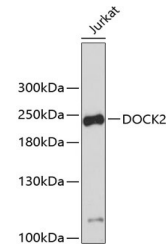


Product Datasheet

DOCK2 Antibody (orb1257855)

Description	DOCK2 Antibody
Species/Host	Rabbit
Reactivity	Human, Mouse
Conjugation	Unconjugated
Tested Applications	WB
Immunogen	Recombinant fusion protein containing a sequence corresponding to amino acids 1551-1830 of human DOCK2 (NP_004937.1).
Target	DOCK2
Preservatives	Liquid
Form/Appearance	Liquid
Concentration	batch dependent
Storage	Store at -20˚°C. Avoid freeze / thaw cycles.
Note	For research use only
Application notes	WB: 1:500 - 1:1000
Isotype	IgG
Clonality	Polyclonal
MW	Observed: 240kDa
Uniprot ID	Q92608
Dilution Range	WB: 1:500 - 1:1000
Expiration Date	12 months from date of receipt.



Western blot analysis of extracts of Jur...