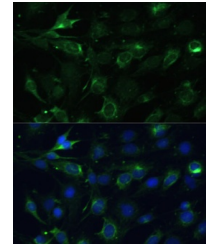


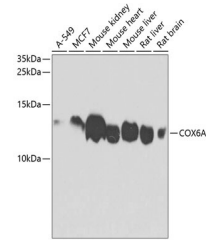
Product Datasheet

COX6A1 Antibody (orb1257822)

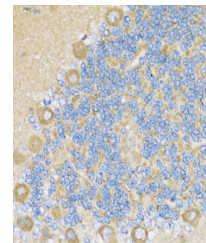
Description	COX6A1 Antibody
Species/Host	Rabbit
Reactivity	Human, Mouse, Rat
Conjugation	Unconjugated
Tested Applications	IF, IHC, WB
Immunogen	Recombinant fusion protein containing a sequence corresponding to amino acids 25-109 of human COX6A1 (NP_004364.2).
Target	COX6A1
Preservatives	Liquid
Form/Appearance	Liquid
Concentration	batch dependent
Storage	Store at -20˚°C. Avoid freeze / thaw cycles.
Note	For research use only
Application notes	WB: 1:200 - 1:2000IHC: 1:20 - 1:200IF: 1:50 - 1:200
Isotype	IgG
Clonality	Polyclonal
MW	Observed: 12kDa
Uniprot ID	P12074
Dilution Range	WB: 1:200 - 1:2000IHC: 1:20 - 1:200IF: 1:50 - 1:200
Expiration Date	12 months from date of receipt.



Immunofluorescence analysis of C6 cells ...



Western blot analysis of extracts of var...



Immunohistochemistry of paraffin-embedde...