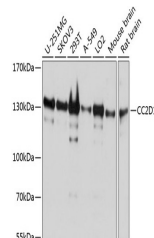


Product Datasheet

CC2D1A Antibody (orb1257643)

Description	CC2D1A Antibody
Species/Host	Rabbit
Reactivity	Human, Mouse, Rat
Conjugation	Unconjugated
Tested Applications	WB
Immunogen	Recombinant fusion protein containing a sequence corresponding to amino acids 1-150 of human CC2D1A (NP_060191.3).
Target	CC2D1A
Preservatives	Liquid
Form/Appearance	Liquid
Concentration	batch dependent
Storage	Store at -20˚°C. Avoid freeze / thaw cycles.
Note	For research use only
Application notes	WB: 1:1000 - 1:2000
Isotype	IgG
Clonality	Polyclonal
MW	Observed: 131kDa
Uniprot ID	Q6P1N0
Dilution Range	WB: 1:1000 - 1:2000
Expiration Date	12 months from date of receipt.



Western blot analysis of extracts of var...