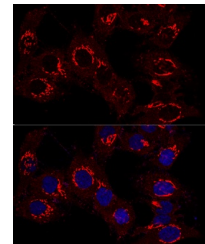


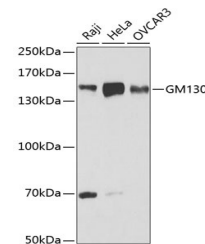
Product Datasheet

GOLGA2 Antibody (orb1257543)

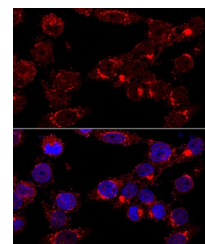
Description	GOLGA2 Antibody
Species/Host	Rabbit
Reactivity	Human, Mouse, Rat
Conjugation	Unconjugated
Tested Applications	IF, IP, WB
Immunogen	Recombinant fusion protein containing a sequence corresponding to amino acids 20-300 of human GM130 (NP_004477.3).
Target	GOLGA2
Preservatives	Liquid
Form/Appearance	Liquid
Concentration	batch dependent
Storage	Store at -20°C. Avoid freeze / thaw cycles.
Note	For research use only
Application notes	WB: 1:500 - 1:2000IF: 1:50 - 1:200IP: 1:50 - 1:100
Isotype	IgG
Clonality	Polyclonal
MW	Observed: 145kDa
Uniprot ID	Q08379
Dilution Range	WB: 1:500 - 1:2000IF: 1:50 - 1:200IP: 1:50 - 1:100
Expiration Date	12 months from date of receipt.



Confocal immunofluorescence analysis of ...



Western blot analysis of extracts of var...



Immunofluorescence analysis of HeLa cell...