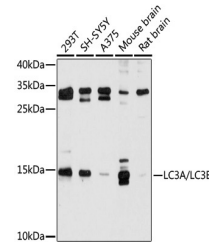


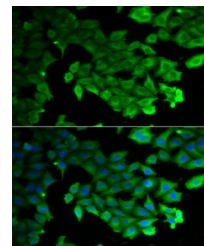
Product Datasheet

MAP1LC3A/MAP1LC3B Antibody (orb1257417)

Description	MAP1LC3A/MAP1LC3B Antibody
Species/Host	Rabbit
Reactivity	Human, Mouse, Rat
Conjugation	Unconjugated
Tested Applications	IF, WB
Immunogen	Recombinant fusion protein containing a sequence corresponding to amino acids 1-121 of human LC3A (NP_115903.1).
Target	MAP1LC3A/MAP1LC3B
Preservatives	Liquid
Form/Appearance	Liquid
Concentration	batch dependent
Storage	Store at -20°C. Avoid freeze / thaw cycles.
Note	For research use only
Application notes	WB: 1:500 - 1:2000IF: 1:50 - 1:200
Isotype	IgG
Clonality	Polyclonal
MW	Observed: 14kDa
Uniprot ID	Q9GZQ8 , Q9H492
Dilution Range	WB: 1:500 - 1:2000IF: 1:50 - 1:200
Expiration Date	12 months from date of receipt.



Western blot analysis of extracts of var...



Immunofluorescence analysis of HeLa cell...