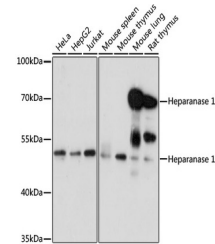


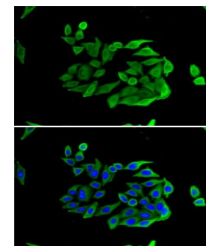
Product Datasheet

HPSE Antibody (orb1257365)

Description	HPSE Antibody
Species/Host	Rabbit
Reactivity	Human, Mouse, Rat
Conjugation	Unconjugated
Tested Applications	IF, WB
Immunogen	Recombinant fusion protein containing a sequence corresponding to amino acids 36-275 of human Heparanase 1 (NP_001092010.1).
Target	HPSE
Preservatives	Liquid
Form/Appearance	Liquid
Concentration	batch dependent
Storage	Store at -20°C. Avoid freeze / thaw cycles.
Note	For research use only
Application notes	WB: 1:500 - 1:2000IF: 1:10 - 1:100
Isotype	IgG
Clonality	Polyclonal
MW	Observed: 50kDa/65kDa
Uniprot ID	Q9Y251
Dilution Range	WB: 1:500 - 1:2000IF: 1:10 - 1:100
Expiration Date	12 months from date of receipt.



Western blot analysis of extracts of var...



Immunofluorescence analysis of U2OS cell...