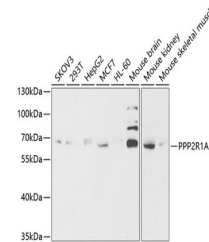


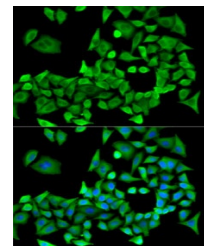
Product Datasheet

PPP2R1A Antibody (orb1257321)

Description	PPP2R1A Antibody
Species/Host	Rabbit
Reactivity	Human, Mouse
Conjugation	Unconjugated
Tested Applications	IF, WB
Immunogen	Recombinant fusion protein containing a sequence corresponding to amino acids 1-270 of human PPP2R1A (NP_055040.2).
Target	PPP2R1A
Preservatives	Liquid
Form/Appearance	Liquid
Concentration	batch dependent
Storage	Store at -20°C. Avoid freeze / thaw cycles.
Note	For research use only
Application notes	WB: 1:500 - 1:2000IF: 1:10 - 1:100
Isotype	IgG
Clonality	Polyclonal
MW	Observed: 65kDa
Uniprot ID	P30153
Dilution Range	WB: 1:500 - 1:2000IF: 1:10 - 1:100
Expiration Date	12 months from date of receipt.



Western blot analysis of extracts of var...



Immunofluorescence analysis of U2OS cell...