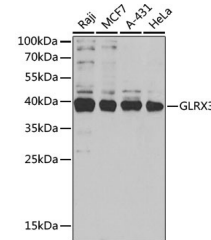


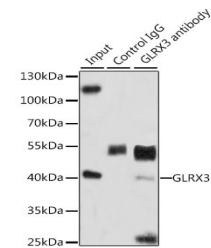
## Product Datasheet

### GLRX3 Antibody (orb1257265)

<b>Description</b>	GLRX3 Antibody
<b>Species/Host</b>	Rabbit
<b>Reactivity</b>	Human
<b>Conjugation</b>	Unconjugated
<b>Tested Applications</b>	IP, WB
<b>Immunogen</b>	Recombinant fusion protein containing a sequence corresponding to amino acids 1-335 of human GLRX3 (NP_001186797.1).
<b>Target</b>	GLRX3
<b>Preservatives</b>	Liquid
<b>Form/Appearance</b>	Liquid
<b>Concentration</b>	batch dependent
<b>Storage</b>	Store at -20°C. Avoid freeze / thaw cycles.
<b>Note</b>	For research use only
<b>Application notes</b>	WB: 1:500 - 1:2000IP: 1:50 - 1:100
<b>Isotype</b>	IgG
<b>Clonality</b>	Polyclonal
<b>MW</b>	Observed: 37kDa
<b>Uniprot ID</b>	<b>076003</b>
<b>Dilution Range</b>	WB: 1:500 - 1:2000IP: 1:50 - 1:100
<b>Expiration Date</b>	12 months from date of receipt.



Western blot analysis of extracts of var...



Immunoprecipitation analysis of 200 ug e...