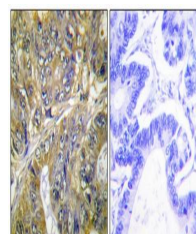


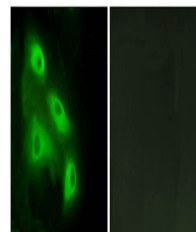
Product Datasheet

EPS8L3 antibody (orb125721)

| | |
|----------------------------|---|
| Description | Rabbit Polyclonal to EPS8L3. |
| Species/Host | Rabbit |
| Reactivity | Human |
| Conjugation | Unconjugated |
| Tested Applications | IF, IHC |
| Immunogen | Internal |
| Concentration | 1mg/ml |
| Storage | Maintain refrigerated at 2-8°C for up to 2 weeks. For long term storage store at -20°C in small aliquots to prevent freeze-thaw cycles. |
| Note | For research use only |
| Clonality | Polyclonal |
| Uniprot ID | Q8TE67 |
| Dilution Range | IHC-P: 1:50-1:100, IF/ICC: 1:100-1:500, ELISA: 1:10000 |
| Expiration Date | 12 months from date of receipt. |



Immunohistochemical analysis of formalin...



Confocal immunofluorescence analysis of ...