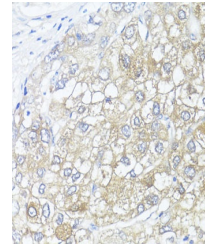


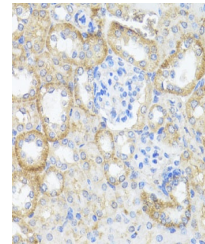
Product Datasheet

ASL Antibody (orb1257071)

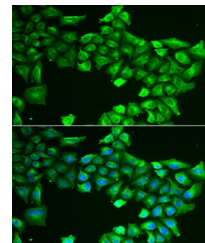
Description	ASL Antibody
Species/Host	Rabbit
Reactivity	Human, Mouse, Rat
Conjugation	Unconjugated
Tested Applications	IF, IHC
Immunogen	Recombinant fusion protein containing a sequence corresponding to amino acids 1-300 of human ASL (NP_000039.2).
Target	ASL
Preservatives	Liquid
Form/Appearance	Liquid
Concentration	batch dependent
Storage	Store at -20˚°C. Avoid freeze / thaw cycles.
Note	For research use only
Application notes	IHC: 1:50 - 1:200IF: 1:50 - 1:100
Isotype	IgG
Clonality	Polyclonal
Uniprot ID	P04424
Dilution Range	IHC: 1:50 - 1:200IF: 1:50 - 1:100
Expiration Date	12 months from date of receipt.



Immunohistochemistry of paraffin-embedde...



Immunohistochemistry of paraffin-embedde...



Immunofluorescence analysis of HeLa cell...