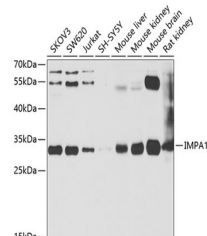


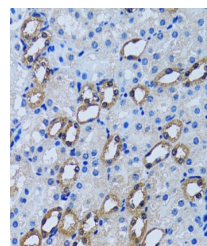
Product Datasheet

IMPA1 Antibody (orb1257053)

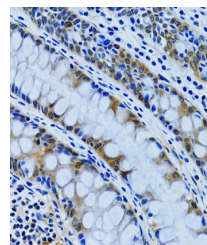
Description	IMPA1 Antibody
Species/Host	Rabbit
Reactivity	Human, Mouse, Rat
Conjugation	Unconjugated
Tested Applications	IF, IHC, WB
Immunogen	Recombinant fusion protein containing a sequence corresponding to amino acids 1-277 of human IMPA1 (NP_005527.1).
Target	IMPA1
Preservatives	Liquid
Form/Appearance	Liquid
Concentration	batch dependent
Storage	Store at -20°C. Avoid freeze / thaw cycles.
Note	For research use only
Application notes	WB: 1:500 - 1:2000 IHC: 1:50 - 1:200 IF: 1:10 - 1:100
Isotype	IgG
Clonality	Polyclonal
MW	Observed: 30kDa
Uniprot ID	P29218
Dilution Range	WB: 1:500 - 1:2000 IHC: 1:50 - 1:200 IF: 1:10 - 1:100
Expiration Date	12 months from date of receipt.



Western blot analysis of extracts of var...



Immunohistochemistry of paraffin-embedde...



Immunohistochemistry of paraffin-embedde...