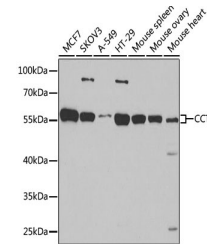


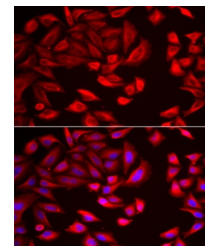
Product Datasheet

CCT2 Antibody (orb1256942)

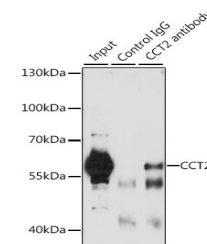
Description	CCT2 Antibody
Species/Host	Rabbit
Reactivity	Human, Mouse
Conjugation	Unconjugated
Tested Applications	IF, IP, WB
Immunogen	Recombinant fusion protein containing a sequence corresponding to amino acids 206-535 of human CCT2 (NP_006422.1).
Target	CCT2
Preservatives	PBS with 0.02% sodium azide, 50% glycerol, pH 7.3.
Form/Appearance	Liquid
Concentration	batch dependent
Storage	Store at -20°C. Avoid freeze / thaw cycles.
Note	For research use only
Application notes	WB: 1:500 - 1:2000IF: 1:50 - 1:200IP: 1:50 - 1:100
Isotype	IgG
Clonality	Polyclonal
MW	Observed: 57kDa
Uniprot ID	P78371
Dilution Range	WB: 1:500 - 1:2000IF: 1:50 - 1:200IP: 1:50 - 1:100
Expiration Date	12 months from date of receipt.



Western blot analysis of extracts of var...



Immunofluorescence analysis of HeLa cell...



Immunoprecipitation analysis of 200 ug e...