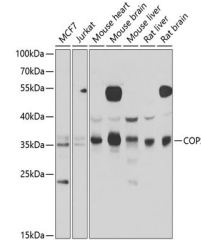


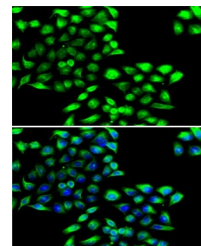
Product Datasheet

COPS6 Antibody (orb1256617)

Description	COPS6 Antibody
Species/Host	Rabbit
Reactivity	Human, Mouse, Rat
Conjugation	Unconjugated
Tested Applications	IF, WB
Immunogen	Recombinant fusion protein containing a sequence corresponding to amino acids 58-327 of human COPS6 (NP_006824.2).
Target	COPS6
Preservatives	Liquid
Form/Appearance	Liquid
Concentration	batch dependent
Storage	Store at -20°C. Avoid freeze / thaw cycles.
Note	For research use only
Application notes	WB: 1:500 - 1:2000IF: 1:50 - 1:100
Isotype	IgG
Clonality	Polyclonal
MW	Observed: 36kDa
Uniprot ID	Q7L5N1
Dilution Range	WB: 1:500 - 1:2000IF: 1:50 - 1:100
Expiration Date	12 months from date of receipt.



Western blot analysis of extracts of var...



Immunofluorescence analysis of MCF7 cell...