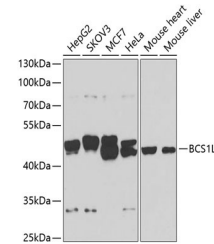


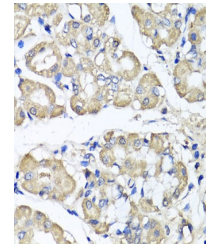
## Product Datasheet

### BCS1L Antibody (orb1256275)

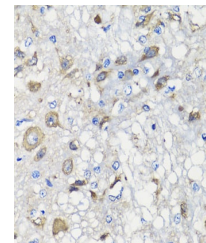
|                            |  |
|----------------------------|--|
| <b>Description</b>         | BCS1L Antibody   |
| <b>Species/Host</b>        | Rabbit   |
| <b>Reactivity</b>          | Human, Mouse, Rat  |
| <b>Conjugation</b>         | Unconjugated   |
| <b>Tested Applications</b> | IF, IHC, WB  |
| <b>Immunogen</b>           | Recombinant fusion protein containing a sequence corresponding to amino acids 33-240 of human BCS1L (NP_004319.1). |
| <b>Target</b>              | BCS1L  |
| <b>Preservatives</b>       | Liquid   |
| <b>Form/Appearance</b>     | Liquid   |
| <b>Concentration</b>       | batch dependent  |
| <b>Storage</b>             | Store at -20°C. Avoid freeze / thaw cycles.  |
| <b>Note</b>                | For research use only  |
| <b>Application notes</b>   | WB: 1:500 - 1:2000 IHC: 1:50 - 1:200 IF: 1:50 - 1:200  |
| <b>Isotype</b>             | IgG  |
| <b>Clonality</b>           | Polyclonal   |
| <b>MW</b>                  | Observed: 48kDa  |
| <b>Uniprot ID</b>          | <a href="#">Q9Y276</a>   |
| <b>Dilution Range</b>      | WB: 1:500 - 1:2000 IHC: 1:50 - 1:200 IF: 1:50 - 1:200  |
| <b>Expiration Date</b>     | 12 months from date of receipt.  |



Western blot analysis of extracts of var...



Immunohistochemistry of paraffin-embedde...



Immunohistochemistry of paraffin-embedde...