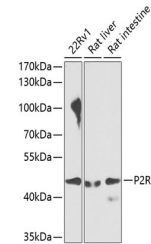


Product Datasheet

P2RY1 Antibody (orb1256243)

Description	P2RY1 Antibody
Species/Host	Rabbit
Reactivity	Human, Mouse, Rat
Conjugation	Unconjugated
Tested Applications	WB
Immunogen	Recombinant fusion protein containing a sequence corresponding to amino acids 274-373 of human P2RY1 (NP_002554.1).
Target	P2RY1
Preservatives	Liquid
Form/Appearance	Liquid
Concentration	batch dependent
Storage	Store at -20˚°C. Avoid freeze / thaw cycles.
Note	For research use only
Application notes	WB: 1:500 - 1:2000
Isotype	IgG
Clonality	Polyclonal
MW	Observed: 42kDa
Uniprot ID	P47900
Dilution Range	WB: 1:500 - 1:2000
Expiration Date	12 months from date of receipt.



Western blot analysis of extracts of var...