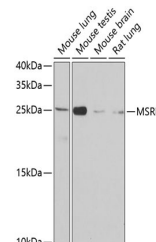


Product Datasheet

MSRB3 Antibody (orb1256037)

| | |
|----------------------------|--|
| Description | MSRB3 Antibody |
| Species/Host | Rabbit |
| Reactivity | Human, Mouse, Rat |
| Conjugation | Unconjugated |
| Tested Applications | IF, WB |
| Immunogen | Recombinant fusion protein containing a sequence corresponding to amino acids 1-185 of human MSRB3 (NP_001026849.1). |
| Target | MSRB3 |
| Preservatives | Liquid |
| Form/Appearance | Liquid |
| Concentration | batch dependent |
| Storage | Store at -20˚°C. Avoid freeze / thaw cycles. |
| Note | For research use only |
| Application notes | WB: 1:500 - 1:2000IF: 1:50 - 1:200 |
| Isotype | IgG |
| Clonality | Polyclonal |
| MW | Observed: 25kDa |
| Uniprot ID | Q8IXL7 |
| Dilution Range | WB: 1:500 - 1:2000IF: 1:50 - 1:200 |
| Expiration Date | 12 months from date of receipt. |



Western blot analysis of extracts of var...