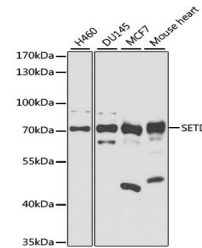


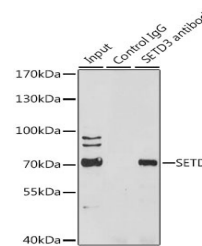
Product Datasheet

SETD3 Antibody (orb1256009)

Description	SETD3 Antibody
Species/Host	Rabbit
Reactivity	Human, Mouse
Conjugation	Unconjugated
Tested Applications	IP, WB
Immunogen	A synthetic peptide corresponding to a sequence within amino acids 1-100 of human SETD3 (NP_115609.2).
Target	SETD3
Preservatives	Liquid
Form/Appearance	Liquid
Concentration	batch dependent
Storage	Store at -20°C. Avoid freeze / thaw cycles.
Note	For research use only
Application notes	WB: 1:500 - 1:2000IP: 1:50 - 1:100
Isotype	IgG
Clonality	Polyclonal
MW	Observed: 70kDa
Uniprot ID	Q86TU7
Dilution Range	WB: 1:500 - 1:2000IP: 1:50 - 1:100
Expiration Date	12 months from date of receipt.



Western blot analysis of extracts of var...



Immunoprecipitation analysis of 200 ug e...