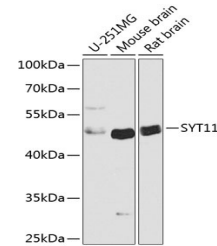


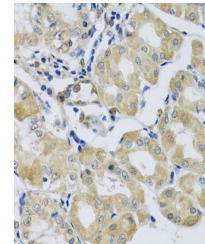
Product Datasheet

SYT11 Antibody (orb1255952)

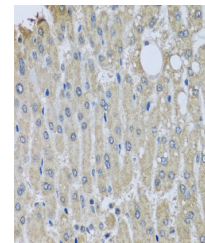
Description	SYT11 Antibody
Species/Host	Rabbit
Reactivity	Human, Mouse, Rat
Conjugation	Unconjugated
Tested Applications	IF, IHC, WB
Immunogen	Recombinant fusion protein containing a sequence corresponding to amino acids 37-200 of human SYT11 (NP_689493.3).
Target	SYT11
Preservatives	Liquid
Form/Appearance	Liquid
Concentration	batch dependent
Storage	Store at -20˚°C. Avoid freeze / thaw cycles.
Note	For research use only
Application notes	WB: 1:500 - 1:2000IHC: 1:50 - 1:100IF: 1:50 - 1:100
Isotype	IgG
Clonality	Polyclonal
MW	Observed: 45kDa
Uniprot ID	Q9BT88
Dilution Range	WB: 1:500 - 1:2000IHC: 1:50 - 1:100IF: 1:50 - 1:100
Expiration Date	12 months from date of receipt.



Western blot analysis of extracts of var...



Immunohistochemistry of paraffin-embedde...



Immunohistochemistry of paraffin-embedde...