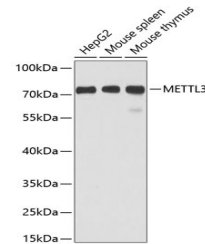


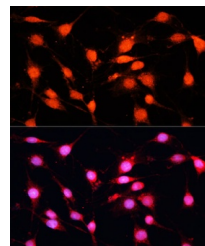
Product Datasheet

METTL3 Antibody (orb1255879)

Description	METTL3 Antibody
Species/Host	Rabbit
Reactivity	Human, Mouse, Rat
Conjugation	Unconjugated
Tested Applications	IF, IHC, IP, WB
Immunogen	Recombinant fusion protein containing a sequence corresponding to amino acids 1-156 of human METTL3 (NP_062826.2).
Target	METTL3
Preservatives	Liquid
Form/Appearance	Liquid
Concentration	batch dependent
Storage	Store at -20°C. Avoid freeze / thaw cycles.
Note	For research use only
Application notes	WB: 1:500 - 1:2000 IHC: 1:50 - 1:200 IF: 1:50 - 1:200 IP: 1:20 - 1:50
Isotype	IgG
Clonality	Polyclonal
MW	Observed: 80kDa
Uniprot ID	Q86U44
Dilution Range	WB: 1:500 - 1:2000 IHC: 1:50 - 1:200 IF: 1:50 - 1:200 IP: 1:20 - 1:50
Expiration Date	12 months from date of receipt.

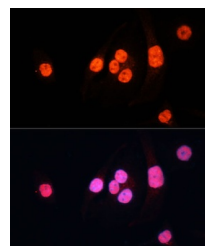


Western blot analysis of extracts of var...



Immunofluorescence analysis of C6 cells

...



Immunofluorescence analysis of HeLa cell...