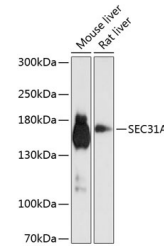


Product Datasheet

SEC31A Antibody (orb1255626)

Description	SEC31A Antibody
Species/Host	Rabbit
Reactivity	Human, Mouse, Rat
Conjugation	Unconjugated
Tested Applications	IF, WB
Immunogen	Recombinant fusion protein containing a sequence corresponding to amino acids 300-500 of human SEC31A (NP_055748.2).
Target	SEC31A
Preservatives	Liquid
Form/Appearance	Liquid
Concentration	batch dependent
Storage	Store at -20˚°C. Avoid freeze / thaw cycles.
Note	For research use only
Application notes	WB: 1:1000 - 1:2000IF: 1:50 - 1:200
Isotype	IgG
Clonality	Polyclonal
MW	Observed: 165kDa
Uniprot ID	094979
Dilution Range	WB: 1:1000 - 1:2000IF: 1:50 - 1:200
Expiration Date	12 months from date of receipt.



Western blot analysis of extracts of var...