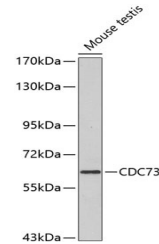


Product Datasheet

CDC73 Antibody (orb1255014)

Description	CDC73 Antibody
Species/Host	Rabbit
Reactivity	Human, Mouse
Conjugation	Unconjugated
Tested Applications	FC, IF, IHC, WB
Immunogen	A synthetic peptide of human CDC73
Target	CDC73
Preservatives	Liquid
Form/Appearance	Liquid
Concentration	batch dependent
Storage	Store at 4˚°C. Avoid freeze / thaw cycles.
Note	For research use only
Application notes	WB: 1:500 - 1:1000IHC: 1:20 - 1:50IF: 1:20 - 1:50Flow: 1:20 - 1:50
Isotype	IgG
Clonality	Polyclonal
MW	Observed: 61kDa
Uniprot ID	Q6P1J9
Dilution Range	WB: 1:500 - 1:1000IHC: 1:20 - 1:50IF: 1:20 - 1:50Flow: 1:20 - 1:50
Expiration Date	12 months from date of receipt.



Western blot analysis of extracts of mou...