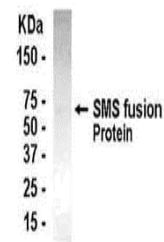


Product Datasheet

SMS Antibody (orb1254071)

Description	SMS Antibody
Species/Host	Gallus
Reactivity	Human, Mouse, Rat
Conjugation	Unconjugated
Tested Applications	WB
Immunogen	206-335
Target	SMS
Preservatives	Phosphate-Buffered Saline. No preservatives added.
Form/Appearance	Liquid
Concentration	1 mg/mL
Storage	SMS antibody can be stored at 4°C for short term (weeks). Long term storage should be at -20°C. As with all antibodies care should be taken to avoid repeated freeze thaw cycles. Antibodies should not be exposed to prolonged high temperatures.
Note	For research use only
Application notes	SMS antibody can be used for the detection of Spermine synthase by Western Blot.
Clonality	Polyclonal
MW	41.3 kDa (calculated)
Uniprot ID	P52788
NCBI	NP_004586.1
Dilution Range	SMS antibody can be used for the detection of Spermine synthase by Western Blot.
Expiration Date	12 months from date of receipt.



E coli-derived fusion protein as test an...