
Product Datasheet

SLC9A3R1 Antibody (orb1253989)

Description

SLC9A3R1 Antibody

Species/Host

Gallus

Reactivity

Human

Conjugation

Unconjugated

Tested Applications

ELISA, WB

Immunogen

240-358

Target

SLC9A3R1

Preservatives

Phosphate-Buffered Saline. No preservatives added.

Form/Appearance

Liquid

Concentration

1 mg/mL

Storage

SLC9A3R1 antibody can be stored at 4°C for short term (weeks). Long term storage should be at -20°C. As with all antibodies care should be taken to avoid repeated freeze thaw cycles. Antibodies should not be exposed to prolonged high temperatures.

Note

For research use only

Application notes

Ezrin-radixin-moesin binding phosphoprotein 50 antibody can be used for the detection of Ezrin-radixin-moesin binding phosphoprotein 50 by ELISA and Western Blot, may also work for ICC and IHC.

Clonality

Polyclonal

MW

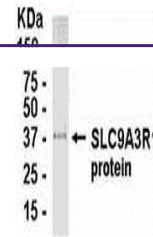
38.7 kDa (calculated)

Uniprot ID
[O14745](#)
NCBI
[NP_004243.1](#)
Dilution Range

Ezrin-radixin-moesin binding phosphoprotein 50 antibody can be used for the detection of Ezrin-radixin-moesin binding phosphoprotein 50 by ELISA and Western Blot, may also work for ICC and IHC.

Expiration Date

12 months from date of receipt.



Direct Elisa
Test. Protein
as test
antig...