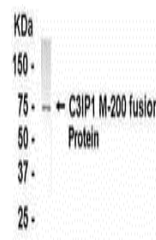


Product Datasheet

KLHL12 Antibody (orb1253921)

Description	KLHL12 Antibody
Species/Host	Gallus
Reactivity	Human
Conjugation	Unconjugated
Tested Applications	WB
Immunogen	205-404
Target	KLHL12
Preservatives	Phosphate-Buffered Saline. No preservatives added.
Form/Appearance	Liquid
Concentration	1 mg/mL
Storage	KLHL12 antibody can be stored at 4°C for short term (weeks). Long term storage should be at -20°C. As with all antibodies care should be taken to avoid repeated freeze thaw cycles. Antibodies should not be exposed to prolonged high temperatures.
Note	For research use only
Application notes	Kelch-like protein C3IP1 antibody can be used for the detection of Kelch-like protein C3IP1 by Western Blot.
Clonality	Polyclonal
MW	63.3 kDa (calculated)
Uniprot ID	Q53G59
NCBI	NP_067646.1
Dilution Range	Kelch-like protein C3IP1 antibody can be used for the detection of Kelch-like protein C3IP1 by Western Blot.
Expiration Date	12 months from date of receipt.



E coli-derived fusion protein as test an...