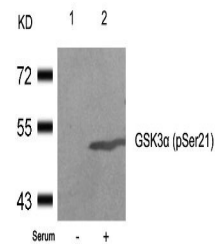


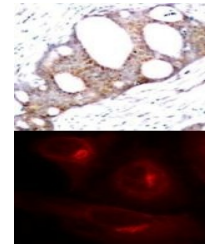
Product Datasheet

GSK3A Antibody (orb1253835)

| | |
|----------------------------|---|
| Description | GSK3A Antibody |
| Species/Host | Rabbit |
| Reactivity | Human, Mouse, Rat |
| Conjugation | Unconjugated |
| Tested Applications | IF, IHC, WB |
| Immunogen | GSK3a (Phospho-Ser21) antibody was raised against a peptide sequence around phosphorylation site of serine 21 (T-S-S (p) -F-A) derived from Human GSK3α. |
| Target | GSK3A |
| Preservatives | Antibody supplied in phosphate buffered saline (without Mg ²⁺ and Ca ²⁺), pH 7.4, 150mM NaCl, 0.02% sodium azide and 50% glycerol. |
| Form/Appearance | Liquid |
| Concentration | 1 mg/mL |
| Storage | Store antibody at -20°C for up to one year. |
| Note | For research use only |
| Application notes | Western Blot: 1:500~1:1000, Immunohistochemistry: 1:50~1:100, Immunofluorescence: 1:100~1:200 |
| Clonality | Polyclonal |
| MW | 51 kDa |
| Uniprot ID | P49840 |
| NCBI | NP_063937.2 |
| Dilution Range | Western Blot: 1:500~1:1000, Immunohistochemistry: 1:50~1:100, Immunofluorescence: 1:100~1:200 |
| Expiration Date | 12 months from date of receipt. |



Western blot analysis of lysed extracts ...



Top Image: Immunohistochemical analysis ...