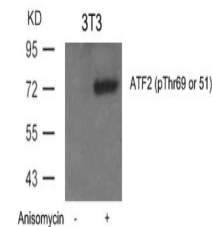


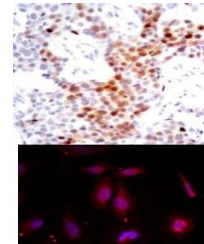
Product Datasheet

ATF2 Antibody (orb1253827)

Description	ATF2 Antibody
Species/Host	Rabbit
Reactivity	Human, Mouse, Rat
Conjugation	Unconjugated
Tested Applications	IF, IHC, WB
Immunogen	ATF2 (Phospho-Thr69 or 51) antibody was raised against a peptide sequence around phosphorylation site of threonine 69 or 51 (D-Q-T (p) -P-T) derived from Human ATF2.
Target	ATF2
Preservatives	Antibody supplied in phosphate buffered saline (without Mg ²⁺ and Ca ²⁺), pH 7.4, 150mM NaCl, 0.02% sodium azide and 50% glycerol.
Form/Appearance	Liquid
Concentration	1 mg/mL
Storage	Store antibody at -20°C for up to one year.
Note	For research use only
Application notes	Western Blot: 1:500, Immunohistochemistry: 1:50~1:100, Immunofluorescence: 1:100~1:200
Clonality	Polyclonal
MW	65 - 75 kDa
Uniprot ID	P15336
NCBI	NP_001871.2
Dilution Range	Western Blot: 1:500, Immunohistochemistry: 1:50~1:100, Immunofluorescence: 1:100~1:200
Expiration Date	12 months from date of receipt.



Western blot analysis of lysed extracts ...



Top Image: Immunohistochemical analysis ...