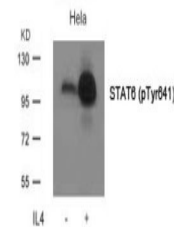


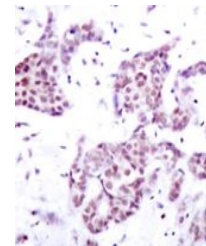
Product Datasheet

STAT6 Antibody (orb1253813)

Description	STAT6 Antibody
Species/Host	Rabbit
Reactivity	Human
Conjugation	Unconjugated
Tested Applications	IHC, WB
Immunogen	STAT6 (Phospho-Tyr641) antibody was raised against a peptide sequence around phosphorylation site of Tyrosine 641 (R-G-Y (p) -V-P) derived from Human STAT6.
Target	STAT6
Preservatives	Antibody supplied in phosphate buffered saline (without Mg ²⁺ and Ca ²⁺), pH 7.4, 150mM NaCl, 0.02% sodium azide and 50% glycerol.
Form/Appearance	Liquid
Concentration	1 mg/mL
Storage	Store antibody at -20°C for up to one year.
Note	For research use only
Application notes	Western Blot: 1:500~1:1000, Immunohistochemistry: 1:50~1:100
Clonality	Polyclonal
MW	110 kDa
Uniprot ID	P42226
NCBI	NP_003144.3
Dilution Range	Western Blot: 1:500~1:1000, Immunohistochemistry: 1:50~1:100
Expiration Date	12 months from date of receipt.



Western blot analysis of lysed extracts ...



Immunohistochemical analysis of paraffin...