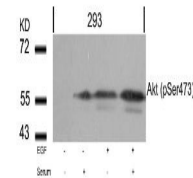


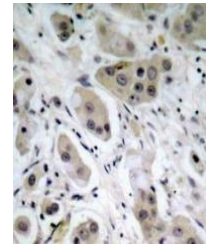
Product Datasheet

AKT1 Antibody (orb1253810)

Description	AKT1 Antibody
Species/Host	Rabbit
Reactivity	Human, Mouse, Rat
Conjugation	Unconjugated
Tested Applications	IHC, WB
Immunogen	Akt (Phospho-Ser473) antibody was raised against a peptide sequence around phosphorylation site of serine 473 (Q-F-S (p) -Y-S) derived from Human Akt.
Target	AKT1
Preservatives	Antibody supplied in phosphate buffered saline (without Mg ²⁺ and Ca ²⁺), pH 7.4, 150mM NaCl, 0.02% sodium azide and 50% glycerol.
Form/Appearance	Liquid
Concentration	1 mg/mL
Storage	Store antibody at -20°C for up to one year.
Note	For research use only
Application notes	Western Blot: 1:500~1:1000, Immunohistochemistry: 1:50~1:100
Clonality	Polyclonal
MW	60 kDa
Uniprot ID	P31749
NCBI	NP_001014431.1
Dilution Range	Western Blot: 1:500~1:1000, Immunohistochemistry: 1:50~1:100
Expiration Date	12 months from date of receipt.



Western blot analysis of lysed extracts ...



Immunohistochemical analysis of paraffin...