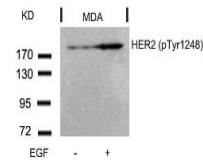


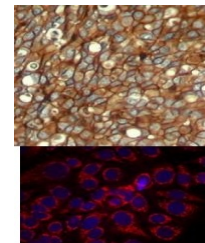
Product Datasheet

ERBB2 Antibody (orb1253800)

Description	ERBB2 Antibody
Species/Host	Rabbit
Reactivity	Human, Mouse, Rat
Conjugation	Unconjugated
Tested Applications	IF, IHC, WB
Immunogen	HER2 (Phospho-Tyr1248) antibody was raised against a peptide sequence around phosphorylation site of tyrosine1248 (P-E-Y (p) -L-G) derived from Human HER2.
Target	ERBB2
Preservatives	Antibody supplied in phosphate buffered saline (without Mg ²⁺ and Ca ²⁺), pH 7.4, 150mM NaCl, 0.02% sodium azide and 50% glycerol.
Form/Appearance	Liquid
Concentration	1 mg/mL
Storage	Store antibody at -20°C for up to one year.
Note	For research use only
Application notes	Western Blot: 1:500~1:1000, Immunohistochemistry: 1:50~1:100, Immunofluorescence: 1:100~1:200
Clonality	Polyclonal
MW	185 kDa
Uniprot ID	P04626
NCBI	NP_001005862.1
Dilution Range	Western Blot: 1:500~1:1000, Immunohistochemistry: 1:50~1:100, Immunofluorescence: 1:100~1:200
Expiration Date	12 months from date of receipt.



Western blot analysis of lysed extracts ...



Top Image: Immunohistochemical analysis ...