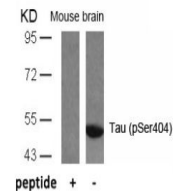


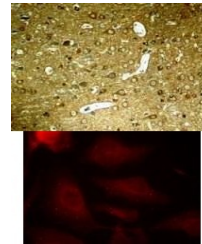
## Product Datasheet

### MAPT Antibody (orb1253787)

|                            |   |
|----------------------------|---|
| <b>Description</b>         | MAPT Antibody   |
| <b>Species/Host</b>        | Rabbit  |
| <b>Reactivity</b>          | Human, Mouse, Rat   |
| <b>Conjugation</b>         | Unconjugated  |
| <b>Tested Applications</b> | IF, IHC, WB   |
| <b>Immunogen</b>           | Tau (Phospho-Ser404) antibody was raised against a peptide sequence around phosphorylation site of serine 404 (D-T-S (p) -P-R) derived from Human Tau.    |
| <b>Target</b>              | MAPT  |
| <b>Preservatives</b>       | Antibody supplied in phosphate buffered saline (without Mg <sup>2+</sup> and Ca <sup>2+</sup> ), pH 7.4, 150mM NaCl, 0.02% sodium azide and 50% glycerol. |
| <b>Form/Appearance</b>     | Liquid  |
| <b>Concentration</b>       | 1 mg/mL   |
| <b>Storage</b>             | Store antibody at -20°C for up to one year.   |
| <b>Note</b>                | For research use only   |
| <b>Application notes</b>   | Western Blot: 1:500~1:1000, Immunohistochemistry: 1:50~1:100, Immunofluorescence: 1:100~1:200   |
| <b>Clonality</b>           | Polyclonal  |
| <b>MW</b>                  | 48, 62, 78 kDa  |
| <b>Uniprot ID</b>          | <a href="#">P10636</a>  |
| <b>NCBI</b>                | <a href="#">NP_001116538.1</a>  |
| <b>Dilution Range</b>      | Western Blot: 1:500~1:1000, Immunohistochemistry: 1:50~1:100, Immunofluorescence: 1:100~1:200   |
| <b>Expiration Date</b>     | 12 months from date of receipt.   |



Western blot analysis of lysed extracts ...



Top Image: Immunohistochemical analysis ...