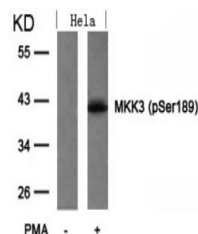


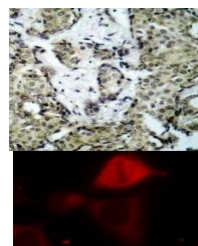
Product Datasheet

MAP2K3 Antibody (orb1253769)

Description	MAP2K3 Antibody
Species/Host	Rabbit
Reactivity	Human, Rat
Conjugation	Unconjugated
Tested Applications	IF, IHC, WB
Immunogen	MKK3 (Phospho-Ser189) antibody was raised against a peptide sequence around phosphorylation site of serine 189 (V-D-S (p) -V-A) derived from Human MKK3.
Target	MAP2K3
Preservatives	Antibody supplied in phosphate buffered saline (without Mg ²⁺ and Ca ²⁺), pH 7.4, 150mM NaCl, 0.02% sodium azide and 50% glycerol.
Form/Appearance	Liquid
Concentration	1 mg/mL
Storage	Store antibody at -20°C for up to one year.
Note	For research use only
Application notes	Western Blot: 1:500~1:1000, Immunohistochemistry: 1:50~1:100, Immunofluorescence: 1:100~1:200
Clonality	Polyclonal
MW	40 kDa
Uniprot ID	P46734
NCBI	NP_002747.2
Dilution Range	Western Blot: 1:500~1:1000, Immunohistochemistry: 1:50~1:100, Immunofluorescence: 1:100~1:200
Expiration Date	12 months from date of receipt.



Western blot analysis of lysed extracts ...



Top Image: Immunohistochemical analysis ...