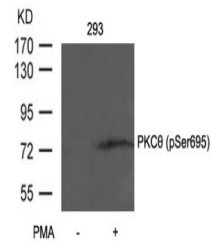


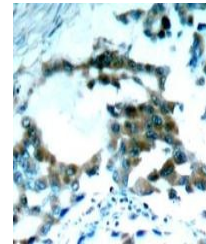
Product Datasheet

PRKCQ Antibody (orb1253756)

Description	PRKCQ Antibody
Species/Host	Rabbit
Reactivity	Human, Mouse, Rat
Conjugation	Unconjugated
Tested Applications	IHC, WB
Immunogen	PKCtheta (Phospho-Ser695) antibody was raised against a peptide sequence around phosphorylation site of serine 695 (N-F-S (p) -F-M) derived from Human PKCθ.
Target	PRKCQ
Preservatives	Antibody supplied in phosphate buffered saline (without Mg ²⁺ and Ca ²⁺), pH 7.4, 150mM NaCl, 0.02% sodium azide and 50% glycerol.
Form/Appearance	Liquid
Concentration	1 mg/mL
Storage	Store antibody at -20°C for up to one year.
Note	For research use only
Application notes	Western Blot: 1:500, Immunohistochemistry: 1:50~1:100
Clonality	Polyclonal
MW	80 kDa
Uniprot ID	Q04759
NCBI	NP_006248.1
Dilution Range	Western Blot: 1:500, Immunohistochemistry: 1:50~1:100
Expiration Date	12 months from date of receipt.



Western blot analysis of lysed extracts ...



Immunohistochemical analysis of paraffin...