
Product Datasheet

HIST1H3D Antibody (orb1253750)

Description

HIST1H3D Antibody

Species/Host

Rabbit

Reactivity

Human, Mouse, Rat

Conjugation

Unconjugated

Tested Applications

IF, IHC, WB

Immunogen

Histone H3.1 (Phospho-Ser10) antibody was raised against a peptide sequence around phosphorylation site of serine 10 (R-K-S (p) -T-G) derived from Human Histone H3.1.

Target

HIST1H3D

Preservatives

Antibody supplied in phosphate buffered saline (without Mg²⁺ and Ca²⁺), pH 7.4, 150mM NaCl, 0.02% sodium azide and 50% glycerol.

Form/Appearance

Liquid

Concentration

1 mg/mL

Storage

Store antibody at -20°C for up to one year.

Note

For research use only

Application notes

Western Blot: 1:500~1:1000,
Immunohistochemistry: 1:50~1:100,
Immunofluorescence: 1:100~1:200

Clonality

Polyclonal

MW

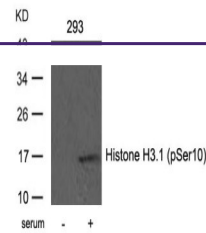
17 kDa

Uniprot ID
[P68431](#)
NCBI
[NP_003521.2](#)
Dilution Range

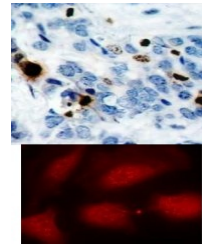
Western Blot: 1:500~1:1000,
Immunohistochemistry: 1:50~1:100,
Immunofluorescence: 1:100~1:200

Expiration Date

12 months from date of receipt.



Western blot analysis of lysed extracts ...



Top Image: Immunohistochemical analysis ...