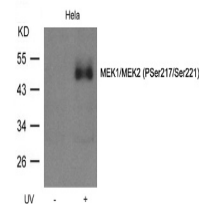


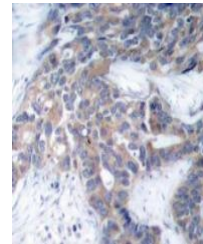
Product Datasheet

MAP2K1 MAP2K2 Antibody (orb1253745)

| | |
|----------------------------|--|
| Description | MAP2K1 MAP2K2 Antibody |
| Species/Host | Rabbit |
| Reactivity | Human, Mouse, Rat |
| Conjugation | Unconjugated |
| Tested Applications | IHC, WB |
| Immunogen | MEK1/MEK2 (Phospho-Ser217/Ser221) antibody was raised against a peptide sequence around phosphorylation site of serine 217/221 (I-D-S (p) - M-A) derived from Human MEK1/MEK2. |
| Target | MAP2K1 MAP2K2 |
| Preservatives | Antibody supplied in phosphate buffered saline (without Mg ²⁺ and Ca ²⁺), pH 7.4, 150mM NaCl, 0.02% sodium azide and 50% glycerol. |
| Form/Appearance | Liquid |
| Concentration | 1 mg/mL |
| Storage | Store antibody at -20°C for up to one year. |
| Note | For research use only |
| Application notes | Western Blot: 1:500~1:1000, Immunohistochemistry: 1:50~1:100 |
| Clonality | Polyclonal |
| MW | 45 kDa |
| Uniprot ID | Q02750 |
| NCBI | NP_002746.1 , NP_109587.1 |
| Dilution Range | Western Blot: 1:500~1:1000, Immunohistochemistry: 1:50~1:100 |
| Expiration Date | 12 months from date of receipt. |



Western blot analysis of lysed extracts ...



Immunohistochemical analysis of paraffin...