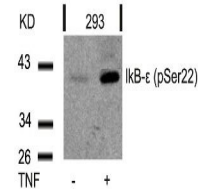


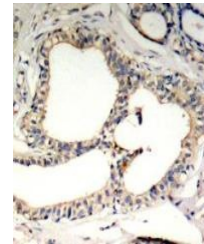
Product Datasheet

NFKBIE Antibody (orb1253743)

Description	NFKBIE Antibody
Species/Host	Rabbit
Reactivity	Human, Mouse
Conjugation	Unconjugated
Tested Applications	IHC, WB
Immunogen	IkB-epsilon (Phospho-Ser22) antibody was raised against a peptide sequence around phosphorylation site of serine 22 (I-E-S (p) -L-R) derived from Human IkB-ε.
Target	NFKBIE
Preservatives	Antibody supplied in phosphate buffered saline (without Mg ²⁺ and Ca ²⁺), pH 7.4, 150mM NaCl, 0.02% sodium azide and 50% glycerol.
Form/Appearance	Liquid
Concentration	1 mg/mL
Storage	Store antibody at -20°C for up to one year.
Note	For research use only
Application notes	Western Blot: 1:500~1:1000, Immunohistochemistry: 1:50~1:100
Clonality	Polyclonal
MW	40 kDa
Uniprot ID	O00221
NCBI	NP_004547.2
Dilution Range	Western Blot: 1:500~1:1000, Immunohistochemistry: 1:50~1:100
Expiration Date	12 months from date of receipt.



Western blot analysis of lysed extracts ...



Immunohistochemical analysis of paraffin...