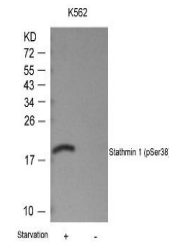


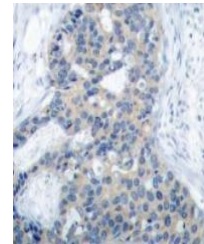
## Product Datasheet

### STMN1 Antibody (orb1253733)

<b>Description</b>	STMN1 Antibody
<b>Species/Host</b>	Rabbit
<b>Reactivity</b>	Human, Mouse, Rat
<b>Conjugation</b>	Unconjugated
<b>Tested Applications</b>	IHC, WB
<b>Immunogen</b>	Stathmin 1 (Phospho-Ser38) antibody was raised against a peptide sequence around phosphorylation site of serine 38 (P-L-S (p) -P-P) derived from Human Stathmin 1.
<b>Target</b>	STMN1
<b>Preservatives</b>	Antibody supplied in phosphate buffered saline (without Mg <sup>2+</sup> and Ca <sup>2+</sup> ), pH 7.4, 150mM NaCl, 0.02% sodium azide and 50% glycerol.
<b>Form/Appearance</b>	Liquid
<b>Concentration</b>	1 mg/mL
<b>Storage</b>	Store antibody at -20°C for up to one year.
<b>Note</b>	For research use only
<b>Application notes</b>	Western Blot: 1:500~1:1000, Immunohistochemistry: 1:50~1:100
<b>Clonality</b>	Polyclonal
<b>MW</b>	19 kDa
<b>Uniprot ID</b>	<a href="#">P16949</a>
<b>NCBI</b>	<a href="#">NP_001138926.1</a>
<b>Dilution Range</b>	Western Blot: 1:500~1:1000, Immunohistochemistry: 1:50~1:100
<b>Expiration Date</b>	12 months from date of receipt.



Western blot analysis of lysed extracts ...



Immunohistochemical analysis of paraffin...