
Product Datasheet

RPS6KB1 Antibody (orb1253712)

Description

RPS6KB1 Antibody

Species/Host

Rabbit

Reactivity

Human, Mouse, Rat

Conjugation

Unconjugated

Tested Applications

IF, IHC, WB

Immunogen

p70 S6 Kinase (Phospho-Ser424) antibody was raised against a peptide sequence around phosphorylation site of serine 424 (P-V-S (p) -P-V) derived from Human p70 S6 Kinase.

Target

RPS6KB1

Preservatives

Antibody supplied in phosphate buffered saline (without Mg²⁺ and Ca²⁺), pH 7.4, 150mM NaCl, 0.02% sodium azide and 50% glycerol.

Form/Appearance

Liquid

Concentration

1 mg/mL

Storage

Store antibody at -20°C for up to one year.

Note

For research use only

Application notes

Western Blot: 1:500~1:1000,
Immunohistochemistry: 1:50~1:100,
Immunofluorescence: 1:100~1:200

Clonality

Polyclonal

MW

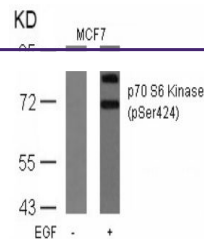
70, 85 kDa

Uniprot ID
[P23443](#)
NCBI
[NP_003152.1](#)
Dilution Range

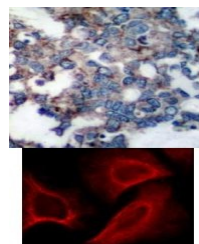
Western Blot: 1:500~1:1000,
Immunohistochemistry: 1:50~1:100,
Immunofluorescence: 1:100~1:200

Expiration Date

12 months from date of receipt.



Western blot analysis of lysed extracts ...



Top Image: Immunohistochemical analysis ...