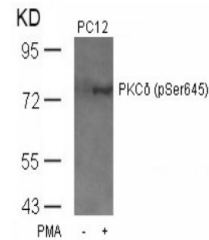


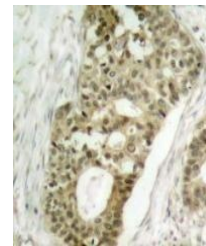
Product Datasheet

PRKCD Antibody (orb1253711)

Description	PRKCD Antibody
Species/Host	Rabbit
Reactivity	Human, Mouse, Rat
Conjugation	Unconjugated
Tested Applications	IHC, WB
Immunogen	PKCdelta (Phospho-Ser645) antibody was raised against a peptide sequence around phosphorylation site of serine 645 (R-L-S (p) -Y-S) derived from Human PKCδ.
Target	PRKCD
Preservatives	Antibody supplied in phosphate buffered saline (without Mg ²⁺ and Ca ²⁺), pH 7.4, 150mM NaCl, 0.02% sodium azide and 50% glycerol.
Form/Appearance	Liquid
Concentration	1 mg/mL
Storage	Store antibody at -20°C for up to one year.
Note	For research use only
Application notes	Western Blot: 1:500~1:1000, Immunohistochemistry: 1:50~1:100
Clonality	Polyclonal
MW	78 kDa
Uniprot ID	Q05655
NCBI	NP_006245.2
Dilution Range	Western Blot: 1:500~1:1000, Immunohistochemistry: 1:50~1:100
Expiration Date	12 months from date of receipt.



Western blot analysis of lysed extracts ...



Immunohistochemical analysis of paraffin...