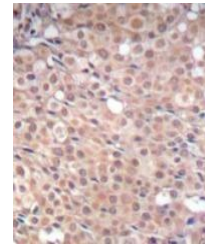
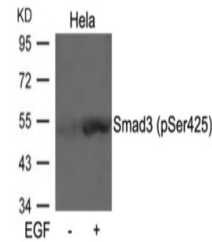


Product Datasheet

SMAD3 Antibody (orb1253703)

Description	SMAD3 Antibody
Species/Host	Rabbit
Reactivity	Human, Mouse, Rat
Conjugation	Unconjugated
Tested Applications	IHC
Immunogen	Smad3 (Phospho-Ser425) antibody was raised against a peptide sequence around phosphorylation site of serine 425 (C-S-S-V-S (p)) derived from Human Smad3.
Target	SMAD3
Preservatives	Antibody supplied in phosphate buffered saline (without Mg ²⁺ and Ca ²⁺), pH 7.4, 150mM NaCl, 0.02% sodium azide and 50% glycerol.
Form/Appearance	Liquid
Concentration	1 mg/mL
Storage	Store antibody at -20°C for up to one year.
Note	For research use only
Application notes	Immunohistochemistry: 1:50~1:100
Clonality	Polyclonal
MW	52 kDa
Uniprot ID	P84022
NCBI	NP_001138574.1
Dilution Range	Immunohistochemistry: 1:50~1:100
Expiration Date	12 months from date of receipt.



Immunohistochemical analysis of paraffin...