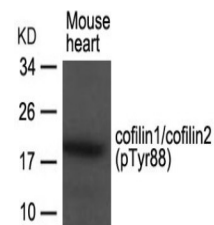


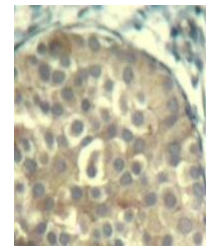
Product Datasheet

CFL1 CFL2 Antibody (orb1253700)

Description	CFL1 CFL2 Antibody
Species/Host	Rabbit
Reactivity	Human, Mouse
Conjugation	Unconjugated
Tested Applications	IHC, WB
Immunogen	cofilin1/cofilin2 (phospho-Tyr88) antibody was raised against a peptide sequence around phosphorylation site of tyrosine 88 (A-T-Y (p) -E-T) derived from Human cofilin1/cofilin2.
Target	CFL1 CFL2
Preservatives	Antibody supplied in phosphate buffered saline (without Mg ²⁺ and Ca ²⁺), pH 7.4, 150mM NaCl, 0.02% sodium azide and 50% glycerol.
Form/Appearance	Liquid
Concentration	1 mg/mL
Storage	Store antibody at -20°C for up to one year.
Note	For research use only
Application notes	Western Blot: 1:500~1:1000, Immunohistochemistry: 1:50~1:100
Clonality	Polyclonal
MW	19 kDa
Uniprot ID	Q9Y281 , P23528
NCBI	NP_005498.1 , NP_068733.1
Dilution Range	Western Blot: 1:500~1:1000, Immunohistochemistry: 1:50~1:100
Expiration Date	12 months from date of receipt.



Western blot analysis of lysed extracts ...



Immunohistochemical analysis of paraffin...